

Parallel Session (C006)

Developing an Institutional Impact Profile



Impact of Science

22-24 June, Leiden

Anika Duut van Goor

Director, AESIS



Impact of Science

22-24 June, Leiden

David Sweeney

*Executive Chair, Research England,
United Kingdom*



Research
England

Developing an Institutional Impact Strategy

David Sweeney

Executive Chair, Research England

23 June 2022

Universities are both private and public, multi-faceted institutions in civil society with a very long-term commitment to people, to their communities and to the world

Impact in Various Forms?

Innovation
Strategy

Levelling
Up agenda

Place
Agenda

Licensing

Training
and Skills

Spinouts

SME's

The Institutional Mission

- Teaching, Research, Engagement: One approach?
- Framing
 - SDGs.
 - Key Stakeholders
 - Global vs Local – and what is ‘local’ to you
 - Concentrate on a few big inputs, or on scaling up numbers of small inputs
 - Universities and Brand
- Support for impact
- Evaluating – how will you know you are a success



**UK Research
and Innovation**



**Research
England**

Thank you

Twitter: @DsweeneyUK

LinkedIn: UK Research and
Innovation

YouTube: UK Research and
Innovation

David Phipps

*Assistant Vice President Research Strategy & Impact,
Division of Vice-President Research & Innovation, Office of Research Services
York University, Canada*

Impact is Local

David Phipps, Executive Director
Research & Innovation Services, York University
Network Director, Research Impact Canada
[@researchimpact](#)

RESEARCH
IMPACT
CANADA

RÉSEAU **IMPACT**
RECHERCHE
CANADA

Turning research into action | De la recherche à l'action



YORK U

York Region's University

↓ TORONTO ↓



Anchor Institutions

The Economic Benefits of Putting Community First



Brian Clarke
FEDERAL RESERVE BANK OF BOSTON

Anchor Institution

“entities such as colleges and universities, hospitals, military bases and local business that are deeply embedded in a community and could not easily move elsewhere”

Holden, E. (2013). An Anchor in Clean Water: The Roles of Anchor Institutions in Managing Great Bay (Doctoral dissertation, TUFTS UNIVERSITY).



one of the largest employers in the Black Creek area and neighbouring York region, employing over 14,000 staff in full and part-time, unionized and non-unionized environments

- **Targeted hiring**, with a benchmark set of eligible employees from surrounding postal codes



Develop social, physical and environmental infrastructure; Buildings and land development that is inclusive of community needs; rapid/public transit hub

“Improve access to York facilities such as the library system, buildings, sports complexes and laboratories. In particular, a number of days each year should be designated as ‘**community use days**’

- **Experiential education**
- **Research and Knowledge mobilization**

Social Procurement, the process of buying goods and services, can positively impact the social well-being of communities and assist to reduce poverty, promote economic and social inclusion





- Public policies
- Funding: research, operations



- Institutional policy/plans
- Services
- Infrastructure
- Funding

RESEARCHER ↔ PARTNER

- Collaboration
- Students
- Dissemination
- End user perspective



An institutional priority: York U



Knowledge for the Future: From Creation to Application

- expanding the influence of our work through broadening and deepening our external partnerships and engagement in the generation and sharing of knowledge and creative works
- maximizing our impact by building on the success of Innovation York to expand student, faculty, and community access to entrepreneurial programming and to increase our innovation activities

Working in Partnership

- developing with partners in Vaughan an integrated, interdisciplinary health precinct that will serve the needs of a growing region, while creating synergies for health-related research, teaching, and innovation
- establishing a UN-sponsored CIFAL1 centre to provide cross-sectoral training and development programs that will advance the UN SDGs
- connecting our entrepreneurship and innovation activities to the broader innovation ecosystem of Ontario

Living Well Together

- continue our actions to support reconciliation through our Indigenous Framework, including additional Indigenous spaces and art works



YORK U



YORK U

CivicLabTO

- Entrepreneurship, start up companies: hot desks, shared meeting rooms
- School/community outreach
- Maker space
- Community engagement
- Community based research
- Legal aid, practicum placements, experiential education
- Knowledge mobilization, research partnerships
- Grant support
- Graduate student research/engagement
- 4 universities, 3 colleges, City of Toronto
- Academic ↔ City research partnerships
- First research summit November 2021

YORK U

@researchimpact



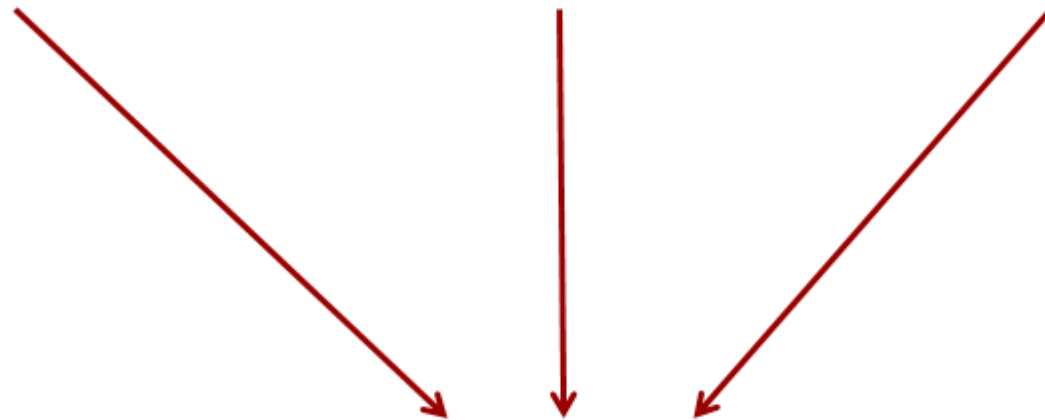
KMb Services Offered at York

Connecting ↔ **Partnering** ↔ **Collaborating**

(Events, Social Media)

(Brokering Relationships/Projects)

(Grant/Project Support)



Impact

(Impact Assessment, Mentoring, Success Stories)

- 2 full time staff
- 2 student assistants
- \$300K/year



	2020-2021	2019-2020
New Brokering Projects	29	34
Faculty Engaged	121	154
Partners Engaged	148	468
Students Engaged	156	284
Funding Applications Submitted	32	26
Value of Applications*	\$24,759,000	\$9,100,000
Events Attended	10	22
Events Supported or Led	68	43

***Total external research income from
KMb Unit supported applications (2006-2019) = \$99M**



BLUEPRINT: AFFORDABLE HOUSING

design for our community.



Attendees – 118

Students

- Centennial – 3
- Durham – 7
- Ryerson – 3
- U of T – 8
- York U – 8
- Seneca – 2
- U Ottawa – 2
- U Waterloo – 2
- High school – 6



McConnell

Civic Innovation Award

Ontario
Trillium
Foundation



Fondation
Trillium
de l'Ontario

An agency of the Government of Ontario
Un organisme du gouvernement de l'Ontario

Innovations
invited to apply
to Collective
Impact Fund



22.11.2016 In top stories [SHARE](#)

York U announces game-changing \$2M gift for music education partnership

York University and the Regent Park School of Music (RPSM) announced on Nov. 16 a \$2-million gift from York Professor Emeritus Allan Carswell and the Carswell Family Foundation to support research and programming to help children succeed through music and the arts.

"It is an honour to thank the Carswell Family Foundation for this incredible gift, which will strengthen evidence-based research in music education and programming, and transform the lives of children for years to come," said Mamdouh Shoukri, York University president and vice-chancellor.



Above: From left, Diane Carswell, Don Carswell, Dean Shawn Birney, Professor Allan Carswell and Richard Marsella with Regent Park School of Music student Melissa Khan (front)



LATEST STORIES

YFile launches a new responsive format starting Jan. 5, 2017..

Proposals for the next round of the Academic Innovation Fund are due Feb. 3..

Make your donation to York before Dec. 31 for 2016 tax receipt..

York University Board of Governors approves new Sexual Violence Policy..

Ceremony formally invests Professor Emeritus Robert Cox into the Order of Canada..

York research shows small businesses benefit more from venture capital funding over bank loans..

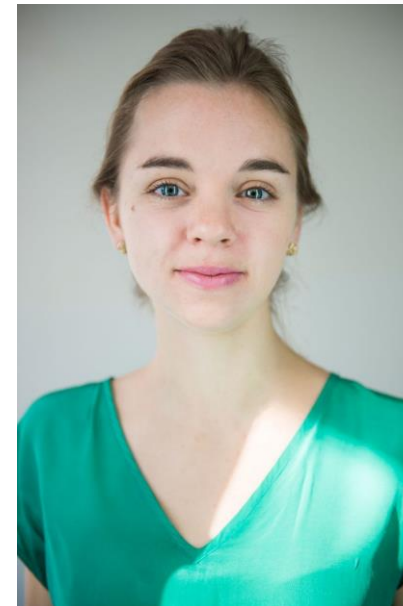
AVP Development Wade Hall to leave York University for post at CAMH Foundation..

Ottawa ends '4-in-4-out' rule for migrant workers..

Passings: Remembering Osgoode Hall Law School Professor Tim Edgar..

Call for submissions: President's Prizes in Creative Writing Competition..

school of the
arts, media,
performance
& design



Amy Hillis, D.Mus.

Assistant Professor
Department of Music

Call for Proposals (CFP) 2022

The Helen Carswell Chair supports projects that can inform the practice, programming, or curricula of a community music school with financial funding up to \$20 000.

CivicLabTO

- 4 universities, 3 colleges, City of Toronto
- Academic ↔ City research partnerships
- First research summit November 2021



Evidence in Use

- Housing
- Sustainability

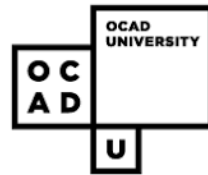
On going connections

- Mental Health in Black communities

YORK 



UNIVERSITY OF
TORONTO



Toronto
Metropolitan
University



Seneca



HUMBER



Anchor Institution - York's Institutional Impact Profile





Small Group (20 mins):

1. Is there an anchor institution in your area?
2. What will you do/are you doing to become an anchor institution
3. What role does research play in your anchor institution?





REPORT BACK





Recommendation

Developing an Institutional Impact Profile

“Universities need to avoid an academic echo chamber by listening to external stakeholders”